

## Safeguarding Information for Volunteers & Partners South Gloucestershire & Stroud Academy Trust

### Safeguarding Statement

The Trust Board and all staff at South Gloucestershire and Stroud Academy Trust (SGSAT) are fully committed to providing the safest possible environment for our students to study in and for our staff to work within. We prioritise and promote the safeguarding and protection of all children, young people and vulnerable adults from harm, whatever their age, culture, disability, gender, language, race, religion/belief and/or sexual orientation.

We have a zero-tolerance approach to any type of abuse and our staff and local school board members are trained in how to raise any concerns they may have and how to handle a disclosure from students or staff in a safe and confidential way. The culture of our Trust is to provide an environment that not only respects, but values difference, and we have no tolerance for any behaviour, that may be demeaning or disrespectful to anyone. The routes for reporting inappropriate behaviour are safe and clearly signposted, as are the potential consequences for anyone who chooses to act in an inappropriate way.

The [SGSAT's Safeguarding Students & Child Protection Policy & Procedure](#) is available to download from SharePoint.

Safeguarding and promoting the welfare of children is **everyone's** responsibility. **Everyone** who comes into contact with children and their families has a role to play. In order to fulfil this responsibility effectively, all practitioners should make sure their approach is child-centred. This means that they should consider, at all times, what is in the **best interests** of the child.

No single practitioner can have a full picture of a child's needs and circumstances. If children and families are to receive the right help at the right time, **everyone** who comes into contact with them has a role to play in identifying concerns, sharing information and taking prompt action.

Safeguarding and promoting the welfare of children is defined as:

- protecting children from maltreatment;
- preventing impairment of children's mental and physical health or development;
- ensuring that children grow up in circumstances consistent with the provision of safe and effective care; and
- taking action to enable all children to have the best outcomes.

\* Definition from 'Department of Education – Keeping Children Safe in Education – Statutory guidance for schools and colleges (September 2020)'

A 'Child' is defined as:

Any Learner under the age of 18 (16 and 17 year olds and below)

'Vulnerable Adult' is defined as:

- 18 years old or older who is, or may be, in need of care due to a mental or physical disability or illness
- Is unable or may not be able to take care of themselves or is unable or may not be able to protect themselves against harm or exploitation (including physical, emotional or financial abuse)

**There are 4 types of Abuse and Neglect:**

1. Emotional
2. Neglect
3. Physical
4. Sexual

**South West Child Protection Procedures**

The South West Region has its own website which contains the [South West Child Protection Procedures](#). Each Board has its own site, which provides a 'gateway' to the shared child protection procedures for the region. In addition to the shared procedures you can also access local guidance for your area by clicking on the local information section within each chapter.

To access the Boards' Child Protection Procedures for your area please click your Board's logo.

**Contact Details**

If you have any safeguarding concerns, Monday – Thursday, 09:00 – 17:00 and Friday, 09:00 – 16:30, you can contact one of the Safeguarding team as follows:

**SGS Pegasus School**

Helen Clark, Assistant Head Teacher & DSL

01454 862057

[Helen.Clark@sgscol.ac.uk](mailto:Helen.Clark@sgscol.ac.uk)

Marcus John, Head Teacher & DDSL

01454 862057

[Marcus.John@sgscol.ac.uk](mailto:Marcus.John@sgscol.ac.uk)

Katie Oram, Pastoral Lead & DDSL

01454 862057

[Katie.Oram@sgscol.ac.uk](mailto:Katie.Oram@sgscol.ac.uk)

**Forest High School**

Rachel Edwards, Assistant Head Teacher & DSL

01594 824682

[Rachel.Edwards@foresthigh.org.uk](mailto:Rachel.Edwards@foresthigh.org.uk)

Sam Chivers, Teaching Assistant & DDSL

01594 824682

[Sam.Chivers@foresthigh.org.uk](mailto:Sam.Chivers@foresthigh.org.uk)

**SGS Berkeley Green UTC**

Gareth Lister, Deputy Head Teacher & DSL

0800 4701516

[Gareth.Lister@berkeleygreenutc.org.uk](mailto:Gareth.Lister@berkeleygreenutc.org.uk)

Graham Withers, Head of Values in Practice & DDSL

0800 4701516

[Graham.Withers@berkeleygreenutc.org.uk](mailto:Graham.Withers@berkeleygreenutc.org.uk)

Nicola Cretney, Values in Practice Co-ordinator & DDSL

0800 4701516

[Nicola.Cretney@berkeleygreenutc.org.uk](mailto:Nicola.Cretney@berkeleygreenutc.org.uk)

**SGS Academy Trust**

Moira Foster-Fitzgerald, Chief Group Services Officer & DSL

07730 133532

[Moira.Foster-Fitzgerald@sgscol.ac.uk](mailto:Moira.Foster-Fitzgerald@sgscol.ac.uk)

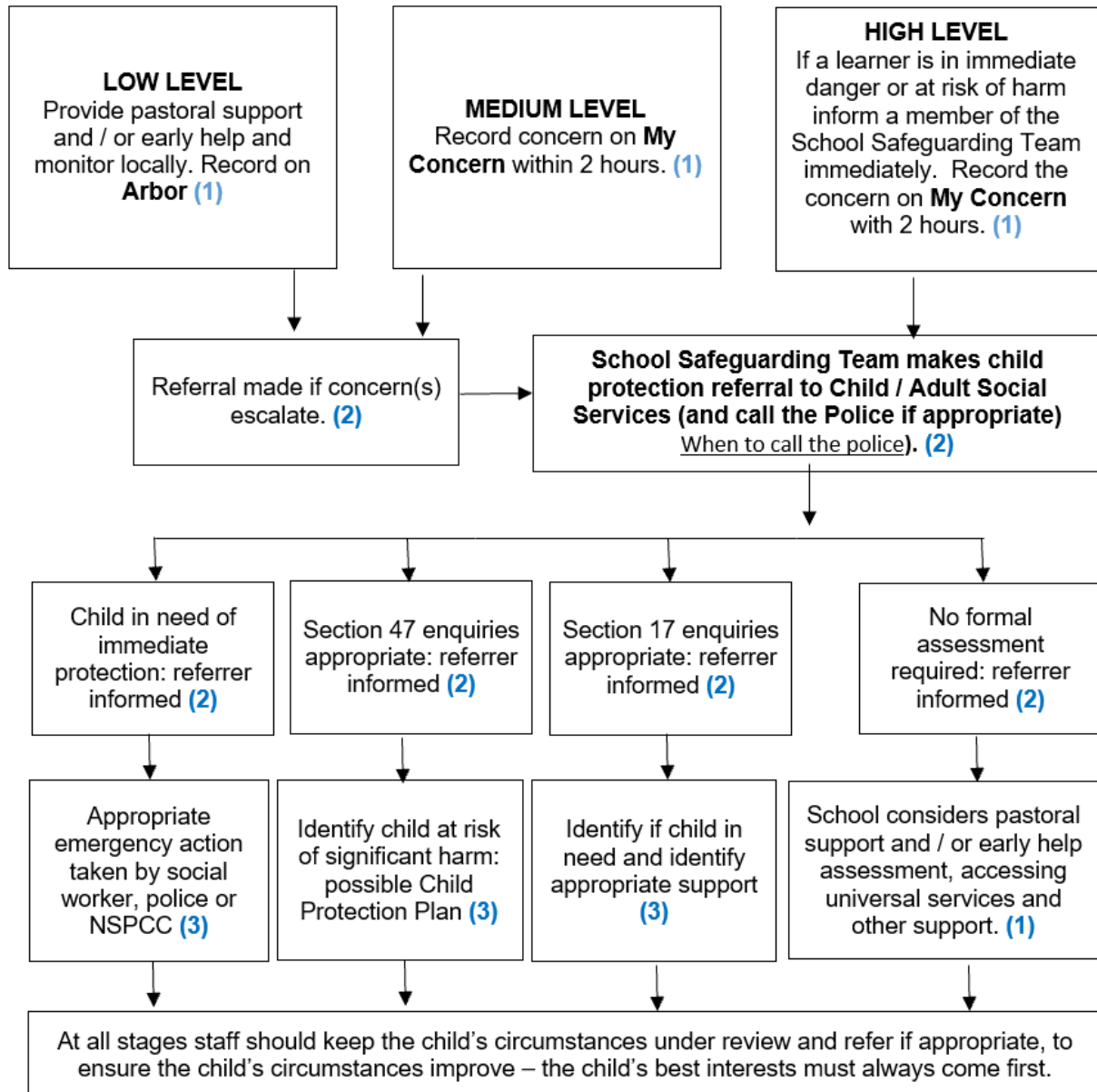
**Useful EXTERNAL contacts include:**

- Bristol Emergency out of Hours team: 01454 615165
- Gloucestershire Emergency out of hours team: 01452 426565
- NSPCC Childline: 0800 1111
- Police (emergency services) 999 OR Police (non-emergency services) 101
- Samaritans: 116 123
- South Gloucestershire Emergency out of hours team: 01454 615165
- South West Child Protection Procedures <https://www.proceduresonline.com/swcpp/>

## Procedure for concerns about the abuse of a Child, Young Person or Vulnerable Adult

### A member of staff has a concern about a learner:

- Low Level – provide pastoral support and / or early help and monitor locally. Record on **Arbor**.
- Medium Level – record concern on **My Concern** within 2 hours.
- High Level – speak to a member of the School Safeguarding Team immediately. Record concern on **My Concern** within 2 hours.



- (1) Early help means providing support as soon as a problem emerges at any point in a child's life. Where a child would benefit from co-ordinated early help, an early help inter-agency assessment should be arranged.
- (2) Under the Children's Act 1989, local authorities are required to provide services for children in need for the purpose of safeguarding and promoting their welfare. Children in need may be assessed under section 17. Under section 47, where a local authority has reasonable cause to suspect that a child is suffering or likely to suffer significant harm, it has a duty to make enquiries to decide whether to take action to safeguard or promote the child's welfare.
- (3) This could include applying for an Emergency Protection Order (EPO).



## Confirmation of Safeguarding and Prevent Policy & Procedure

I can confirm that as a volunteer or partner of SGS Academy Trust, I have read and understood the following documents:

- SGSAT Safeguarding information for Volunteers & Partners
- SGSAT Prevent Information for Volunteers & Partners

Name:

Signature:

Date:

SGSAT

Tutor Name:

SGSAT

Tutor Signature:

Date:

**Please return this form to HR along with the Volunteer & Partner Registration Forms.**